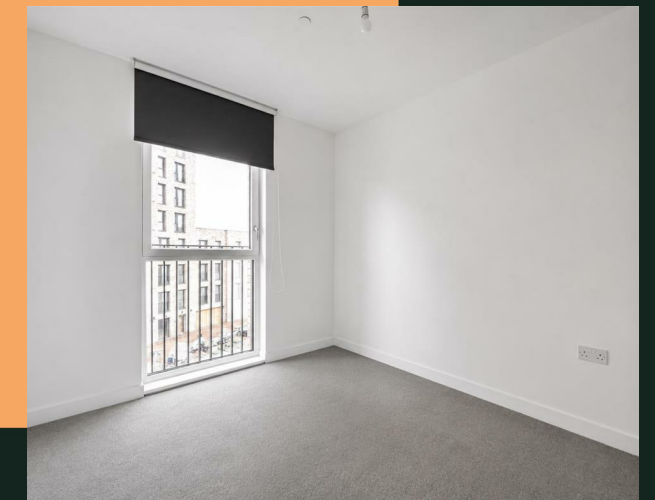


Griffiths Close, B12

PROPERTY ADDRESS

Apartment 322
1 Griffiths Close
Birmingham
B12 9BB

Energy Efficiency Rating		Current	Potential
<i>Very energy efficient - lower running costs</i>			
(92 plus) A			
(81-91) B		82	82
(69-80) C			
(55-68) D			
(39-54) E			
(21-38) F			
(1-20) G			
<i>Not energy efficient - higher running costs</i>			
England & Wales	EU Directive 2002/91/EC		



-
- Total cost of first month: £1,992.30 (rent & deposit)
 - Unfurnished
 - Concierge
 - Gym
 - Cinema room
-

The recently-built apartment is unfurnished and briefly comprises of a bright and airy open plan living, kitchen and dining area, a double bedroom and a bathroom. The bedroom comes with a fitted mirrored wardrobe.

Belgrave Village is the new vibrant neighbourhood located in the heart of Birmingham with access to local amenities such as Edgbaston stadium, Cannon Hill Park, Moseley Village, Broadway Plaza, Brindley Place, Bullring and Grand Central. These are all easily accessible with the excellent local transport system which includes a vast range of bus services and nearby train stations such as New Street, Snow Hill and Five Ways.

The development itself has numerous facilities for residents including a concierge service, gym, co-working space and screening room, all set within attractive green surroundings.

Available from 4th August subject to acceptable referencing.

Rent: £925 per calendar month
Holding deposit: £213.46
Deposit: £1,067.30

Please note the photos and floorplan are of a similar apartment in Belgrave

